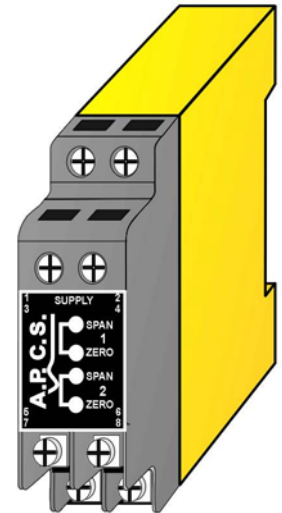


SIGNAL SPLITTER (v2) SSP235

DESCRIPTION

The Signal Splitter SSP235 is an isolating converter providing true 4-way galvanic isolation up to 2kV r.m.s. The SSP235 produces two isolated unipolar output signals from one input signal. The SSP235 comes in three, coding plug selectable, models to accept either Process, mV or Bipolar input signals. No special tools or components are required for range changing in the field. A 20Vdc/22mA sensor supply is available at the input section, this can be useful for loop powered field transmitters. Final calibration is trimmed using the front accessible zero and span 15-turn trim adjustments. Maximum current drive is 20mA and maximum voltage drive is 20V. Both outputs are isolated from each other. The wide swing DC-power supply (8-60V) covers all popular DC sources. All units are fitted with a 500mS filter that can be link changed to 5mS for fast response. Surge protection for power supply and input is standard with all A.P.C.S. modules.



General Specifications

Size:	22.5W x 68H x 109D (mm).
Mounting:	Clip for 35mm DIN-Rail.
Housing material:	Polycarbonate.
Termination:	Top mounted screw terminals.
Protection class:	IP40 (IP55 Enclosure Opt).
Weight:	0.120 kg.
Protection class:	IP40.
Calibration accuracy:	<0.2%.
Front 'SPAN' adjust:	±25% typical.
Front 'ZERO' adjust:	+20/ -10% typical.
Linearity:	<0.1%.
Long term drift:	<0.1%.
Temperature effect:	Typically 0.025% of span per °C.
Operating temperature:	-10...+60°C.
Output drive:	10mA into 0 - 2kΩ, 20mA into 0 - 1kΩ
Input impedance:	Current 51Ω. Voltage 2M7 Ω (10V/5V range). 560k Ω (2V/1V range). mV 140k Ω (250-1000mV ranges). 30k Ω (40-200mV ranges).

Supply/Input/output 1

/output 2 isolation:

2kV r.m.s.

Auxiliary Output:

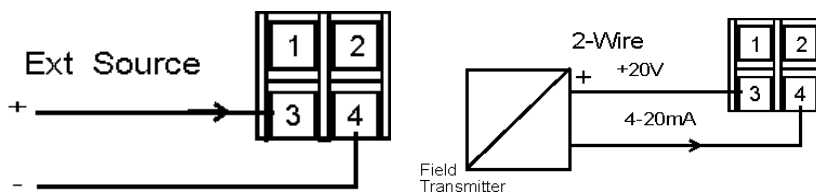
20Vdc with 22mA drive (Suitable for 2-wire transmitter supply).

Electromagnetic compatibility: Complies with AS/NZS 4251.1 (EN 50081.1) 

Connections

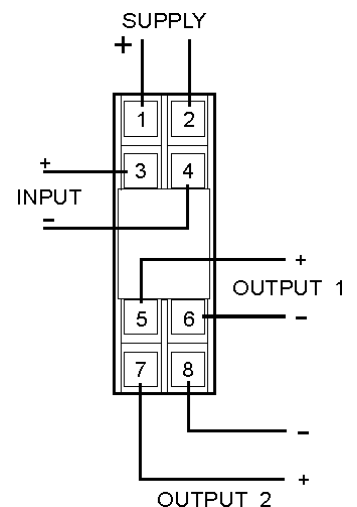
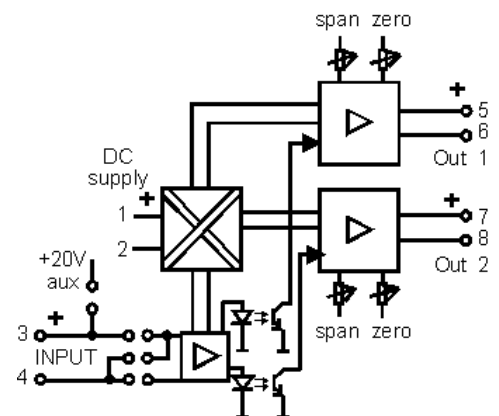
When externally sourced signals are used terminal 3 is the positive input.

When a 2-wire field transmitter is used, terminal 3 is a 20V power supply used to supply the loop current.



For input / output combinations refer to TYPE NO. DESIGNATION overleaf.

Block Diagram



Power Supply:

- 3 = 8 - 60Vdc.
- *) 4 = 60 - 160Vdc
- *) 5 = 20 - 48Vac.
- *) 6 = 48 - 150Vac.

Input (Specify required range from selected table):

- 1 = Process Signals, Table 2 (4-20mA external source default).
- 2 = Millivolt Signals, Table 4 (75mV def).
- 3 = Bipolar Signals, Table 5 ($\pm 10V$ def).
- *) 4 = Thermocouple (specify).
- *) 5 = RTD (specify).
- *) 6 = Frequency / Pulse (specify).
- *) 7 = Resistance 2W (specify).
- *) 8 = AC Current / Voltage (specify).
- *) 9 = Other. (Specify).

All extra price inputs disable future use of the program links on both the input and the output. Refer to DS23522 for input options connection, specification and ordering requirements.

Output 1 (Specify required range):

- 1 = Table 6/ SW2, (4-20mA default).
- *) 9 = Other. (Specify, disable links).

Output 2 (Specify required range):

- 1 = Table 6/ SW3, (4-20mA default).
- *) 9 = Other. (Specify, disable links).

Action:

- 1 = Out 1 Dir, Out 2 Dir.
- 2 = Out 1 Rev, Out 2 Rev.
- 3 = Out 1 Rev, Out 2 Dir.
- 4 = Out 1 Dir, Out 2 Rev.

Options:

- 0 = None.
- *) 1 = Customised response time (Specify).
- *) 2 = Range splitting (specify SP see note).
- 3 = Bipolar Millivolt Signals, DS23523 ($\pm 75mV$ def).
- *) 9 = Other.

Range Splitting

The Range Splitting Split Point (SP) normally set at 0.5 is specified when ordering. If SP = 0.5 then

- 0-50% IN = 0-100% at OUT1
- 50-100% IN = 0-100% OUT2.Input

Response time Table 1

Table 1	SW1/1
5mS	
500mS	X

Process input Table 2

Table 2	SW1					
Input	2	3	4	5	6	7
4-20mA	X	X	X			X
0-20mA	X	X	X		X	
0-10mA	X	X	X	X	X	
0-1V		X	X		X	
0-2V		X			X	
0-5V			X		X	
1-5V			X			X
0-10V						X

2 Wire or others Table 3

Table 3	SW1			
Input	8	9	8a	9a
2-wire			X	X
All others	X	X		

Note the two wire setting is only used when set on the 4-20mA range.

Millivolt input Table 4

Table 4	SW1					
Input	2	3	4	5	6	7
0-40mV		X	X	X		
0-50mV		X	X	X	X	
0-75mV		X	X			
0-100mV		X	X		X	
0-150mV		X		X	X	
0-200mV		X			X	
0-250mV			X	X	X	
0-400mV			X			
0-500mV			X		X	
0-600mV				X		
0-750mV				X	X	
0-1000mV					X	

Bipolar input Table 5

Table 5	SW1					
Input	2	3	4	5	6	7
$\pm 20mA$	X	X	X		X	
$\pm 10mA$	X	X	X	X	X	
$\pm 1V$		X	X		X	
$\pm 2V$		X			X	
$\pm 5V$			X		X	
$\pm 10V$					X	

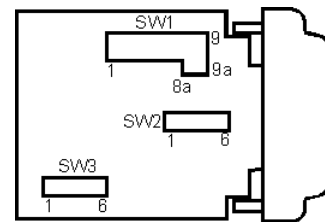
Output(s) Table 6

Table 6	SW2 / SW3					
Output	1	2	3	4	5	6
4-20mA	X		X			
0-20mA		X				
0-10mA				X		
0-5V		X				X
1-5V	X		X			X
0-10V		X			X	

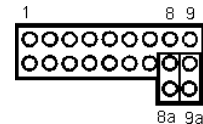
To change ranges

1. Disconnect power unclip housing lid and withdraw unit from housing.
2. Set coding plugs as required.
3. Reassemble unit and connect power.
4. Adjust "Span and "Offs" pots to recalibrate.
5. Change the label information to the new input/output values.

Coding Plug Location Diagram



Coding Plug 1 Detail



*) Price Extra.

In the interest of development and improvement, A.P.C.S. Pty. Ltd. reserve the right to amend, without notice, details contained in this publication. A.P.C.S. PTY. LTD. will accept no legal liability for any errors, omissions or amendments.